

• SYSTEMA INOX[®] •

• Tappi Terminali e Sfere ^{by} *ind.i.a.*

• End Caps and (Spherical Finials) Sphere

La più vasta gamma di terminali
è solo SYSTEMA INOX[®]

Only SYSTEMA INOX[®]
has the widest range of
end caps

38
NUOVI PRODOTTI
NEW PRODUCTS

Tappi Terminali Piani Massicci per Tubo - Flat, Solid End Caps for Tubes

Satinati, con zigrinatura
Satin finish, with knurling



| AISI 303 | Cod. art. | Per tubo |
|----------|-----------|---|
| | Art. no. | For tube |
| | E01153 | Ø 26,9 x 2,0 mm - 1 7/128" dia. x 5/64" |
| | E0115 | Ø 33,7 x 2,0 mm - 1 1/3" dia. x 5/64" |
| | E01151 | Ø 42,4 x 2,0 mm - 1 2/3" dia. x 5/64" |
| | E01152 | Ø 48,3 x 2,0 mm - 1 7/8" dia. x 5/64" |
| | E01154 | Ø 60,3 x 2,0 mm - 2 3/8" dia. x 5/64" |
| | E01155 | Ø 50,8 x 2,0 mm - 2" dia. x 5/64" |

Satinati, con zigrinatura
Satin finish, with knurling



| AISI 316 | Cod. art. | Per tubo |
|----------|-----------|---------------------------------------|
| | Art. no. | For tube |
| | E41451 | Ø 33,7 x 2,0 mm - 1 1/3" dia. x 5/64" |
| | E4146 | Ø 42,4 x 2,0 mm - 1 2/3" dia. x 5/64" |
| | E4147 | Ø 48,3 x 2,0 mm - 1 7/8" dia. x 5/64" |

Satinati, con zigrinatura e foro filettato passante
Satin finish, with knurling, and threaded hole insert



| AISI 316 | Cod. art. | Per tubo | Foro filettato |
|----------|-----------|---------------------------------------|----------------|
| | Art. no. | For tube | Threaded hole |
| | E4148 | Ø 33,7 x 2,0 mm - 1 1/3" dia. x 5/64" | M8 |
| | E4149 | Ø 42,4 x 2,0 mm - 1 2/3" dia. x 5/64" | M8 |

Satinati, con zigrinatura e foro filettato passante
Satin finish, with knurling, and threaded hole insert

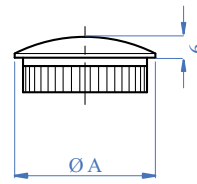


| AISI 303 | Cod. art. | Per tubo | Foro filettato |
|----------|-----------|---------------------------------------|----------------|
| | Art. no. | For tube | Threaded hole |
| | E01157 | Ø 33,7 x 2,0 mm - 1 1/3" dia. x 5/64" | M8 |
| | E01158 | Ø 42,4 x 2,0 mm - 1 2/3" dia. x 5/64" | M8 |

Tappi Terminali Bombati Massicci per Tubo - Rounded, Solid End Caps for Tube

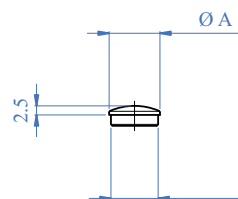
Satinati con zigrinatura
Satin finish with knurling

| AISI 303 | Cod. art. Art. no. | Per tubo For tube | A |
|----------|-----------------------|---|---|
| | E01171 | Ø 21,3 x 2,0 mm - 27/32" dia. x 5/64" | |
| | E01172 | Ø 26,9 x 2,0 mm - 1 7/128" dia. x 5/64" | |
| | E0117 | Ø 33,7 x 2,0 mm - 1 1/3" dia. x 5/64" | |
| | E0119 | Ø 42,4 x 2,0 mm - 1 2/3" dia. x 5/64" | |
| | E01191 | Ø 48,3 x 2,0 mm - 1 7/8" dia. x 5/64" | |
| | E01173 | Ø 60,3 x 2,0 mm - 2 3/8" dia. x 5/64" | |
| | E01190 | Ø 50,8 x 2,0 mm - 2 dia. x 5/64" | |



Satinati senza zigrinatura
Satin finish, without knurling

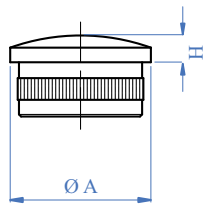
| AISI 303 | Cod. art. Art. no. | Per tubo For tube | A |
|------------|-----------------------|---------------------------------------|---|
| | E0118 | Ø 12,0 x 0,5 mm - 1/2" dia. x 5/256" | |
| | E01181 | Ø 14,0 x 0,5 mm - 9/16" dia. x 5/256" | |
| NEW | E01182 | Ø 12,0 x 1,5 mm - 1/2" dia. x 5/64" | |
| NEW | E01183 | Ø 14,0 x 1,5 mm - 9/16" dia. x 5/64" | |



| AISI 316 | Cod. art. Art. no. | Per tubo For tube | A |
|------------|-----------------------|---------------------------------------|---|
| | E0118316 | Ø 12,0 x 0,5 mm - 1/2" dia. x 5/256" | |
| | E01181316 | Ø 14,0 x 0,5 mm - 9/16" dia. x 5/256" | |
| NEW | E01182316 | Ø 12,0 x 1,5 mm - 1/2" dia. x 5/64" | |
| NEW | E01183316 | Ø 14,0 x 1,5 mm - 9/16" dia. x 5/64" | |

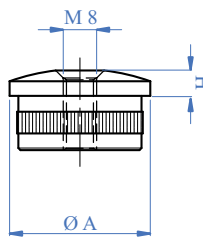
Tappi Terminali Bombati Massicci per Tubo - Rounded, Solid End Caps for Tube

Satinati, con zigrinatura, massicci
Satin finish with knurling



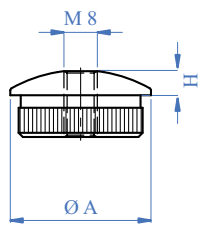
| AISI 316 | Cod. art. Art. no. | Per tubo For tube | A | H |
|----------|-----------------------|--|------------------|---|
| | E4139 | Ø 33,7 x 2,0 mm 1 1/3" dia. x 5/64" | 6,5 mm 17/64" | |
| | E4141 | Ø 42,4 x 2,0 mm 1 2/3" dia. x 5/64" | 9 mm 11/32" | |
| | E4142 | Ø 48,3 x 2,0 mm 1 7/8" dia. x 5/64" | 10 mm 3/8" | |

Satinato con foro filettato e zigrinatura
With threaded hole and knurling



| AISI 316 | Cod. art. Art. no. | Per tubo For tube | A | Foro filettato Threaded hole | H |
|----------|-----------------------|--|---|---------------------------------|----------------|
| | E4143 | Ø 33,7 x 2,0 mm 1 1/3" dia. x 5/64" | | M8 | 6 mm 1/4" |
| | E4144 | Ø 42,4 x 2,0 mm 1 2/3" dia. x 5/64" | | M8 | 9 mm 11/32" |
| | E011961316 | Ø 48,3 x 2,0 mm 1 7/8" dia. x 5/64" | | M8 | 10 mm 3/8" |

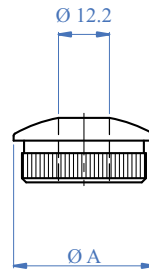
Satinato con foro filettato e zigrinatura
With threaded hole and knurling



| AISI 303 | Cod. art. Art. no. | Per tubo For tube | A | Foro filettato Threaded hole | H |
|----------|-----------------------|--|---|---------------------------------|---------------|
| | E01195 | Ø 33,7 x 2,0 mm 1 1/3" dia. x 5/64" | | M8 | 6 mm 1/4" |
| | E01196 | Ø 42,4 x 2,0 mm 1 2/3" dia. x 5/64" | | M8 | 7 mm 9/32" |
| | E011961 | Ø 48,3 x 2,0 mm 1 7/8" dia. x 5/64" | | M8 | 7 mm 9/32" |

Terminali con Foro Passante - End Caps with Passing Holes

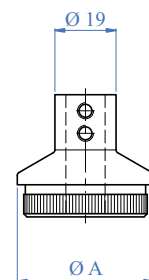
Satinato con foro passante e zigrinatura
With hole and knurling



| AISI 303 | Cod. art. Art. no. | Per tubo For tube | A | Foro passante Through hole |
|----------|-----------------------|--|---|-------------------------------|
| | E01195/122 | Ø 33,7 x 2,0 mm 1 1/3" dia. x 5/64" | | Ø 12,2 mm 31/64" dia. |
| | E01196/122 | Ø 42,4 x 2,0 mm 1 2/3" dia. x 5/64" | | Ø 12,2 mm 31/64" dia. |

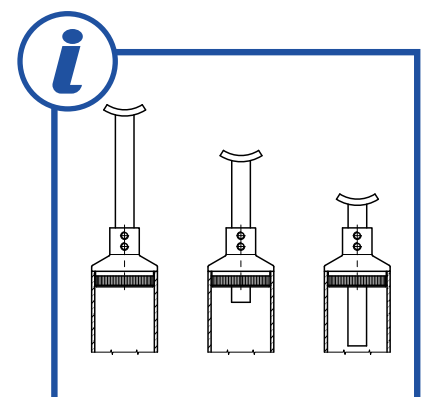
| AISI 316 | Cod. art. Art. no. | Per tubo For tube | A | Foro passante Through hole |
|------------|-----------------------|--|---|-------------------------------|
| NEW | E02195/122 | Ø 33,7 x 2,0 mm 1 1/3" dia. x 5/64" | | Ø 12,2 mm 31/64" dia. |
| NEW | E02196/122 | Ø 42,4 x 2,0 mm 1 2/3" dia. x 5/64" | | Ø 12,2 mm 31/64" dia. |

Satinato con foro passante, zigrinatura e 2 grani
With holes knurling and 2 screw holes



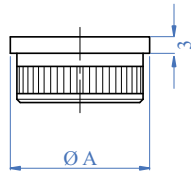
| AISI 303 | Cod. art. Art. no. | Per tubo For tube | A | Foro passante Through hole |
|----------|-----------------------|--|---|-------------------------------|
| | E01195100 | Ø 33,7 x 2,0 mm 1 1/3" dia. x 5/64" | | Ø 12,2 mm 31/64" dia. |
| | E01196100 | Ø 42,4 x 2,0 mm 1 2/3" dia. x 5/64" | | Ø 12,2 mm 31/64" dia. |

| AISI 316 | Cod. art. Art. no. | Per tubo For tube | A | Foro passante Through hole |
|----------|-----------------------|--|---|-------------------------------|
| | E02195100 | Ø 33,7 x 2,0 mm 1 1/3" dia. x 5/64" | | Ø 12,2 mm 31/64" dia. |
| | E02196100 | Ø 42,4 x 2,0 mm 1 2/3" dia. x 5/64" | | Ø 12,2 mm 31/64" dia. |



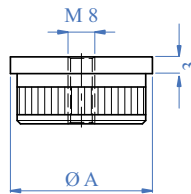
Tappi Terminali Piatti Vuoti per Tubo - Flat, Hollow End Caps for Tube

Satinati, con zigrinatura
Satin finish, with knurling



| AISI 316 | Cod. art. Art. no. | Per tubo For tube | A |
|----------|-----------------------|---------------------------------------|---|
| | E4100 | Ø 42,4 x 2,0 mm - 1 2/3" dia. x 5/64" | |

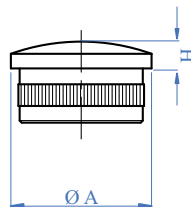
Satinati, con foro filettato e zigrinatura
Satin finish, with theraded hole and knurling



| AISI 316 | Cod. art. Art. no. | Per tubo For tube | A | Foro filettato Threaded hole |
|----------|-----------------------|---------------------------------------|---|---------------------------------|
| | E4110 | Ø 42,4 x 2,0 mm - 1 2/3" dia. x 5/64" | | M8 |

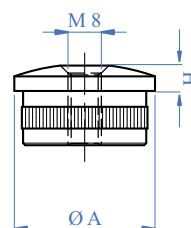
Tappi Terminali Bombati Vuoti per Tubo - Rounded, Hollow End Caps for Tube

Satinati, con zigrinatura
Satin finish with knurling



| AISI 316 | Cod. art. Art. no. | Per tubo For tube | A | H |
|----------|-----------------------|---------------------------------------|---|---------------|
| | E4115 | Ø 33,7 x 2,0 mm - 1 1/3" dia. x 5/64" | | 7 mm - 9/32" |
| | E4120 | Ø 42,4 x 2,0 mm - 1 2/3" dia. x 5/64" | | 9 mm - 11/32" |

Satinati, con foro filettato e zigrinatura
Satin finish, with theraded hole and knurling

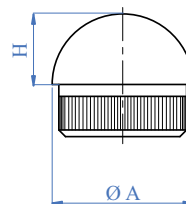


| AISI 316 | Cod. art. Art. no. | Per tubo For tube | A | Foro filettato Threaded hole | H |
|----------|-----------------------|---------------------------------------|---|---------------------------------|---------------|
| | E4116 | Ø 33,7 x 2,0 mm - 1 1/3" dia. x 5/64" | | M8 | 5 mm - 3/16" |
| | E4130 | Ø 42,4 x 2,0 mm - 1 2/3" dia. x 5/64" | | M8 | 7 mm - 9/32" |
| | E4131 | Ø 48,3 x 2,0 mm - 1 7/8" dia. x 5/64" | | M8 | 9 mm - 11/32" |

Tappi Terminali Semisferici - Semispherical End Caps

Massicci, satinati con zigrinatura
Solid, satin finish with knurling

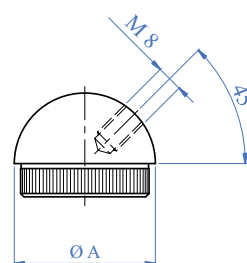
| AISI 303 | Cod. art. Art. no. | Per tubo For tube | A | H |
|----------|-----------------------|---|----------------|---|
| | E01110 | Ø 26,9 x 2,0 mm - 1 7/128" dia. x 5/64" | 14 mm - 9/16" | |
| | E01111 | Ø 33,7 x 2,0 mm - 1 1/3" dia. x 5/64" | 17 mm - 21/32" | |
| | E01112 | Ø 42,4 x 2,0 mm - 1 2/3" dia. x 5/64" | 20 mm - 3/4" | |
| | E01116 | Ø 48,3 x 2,0 mm - 1 7/8" dia. x 5/64" | 20 mm - 3/4" | |



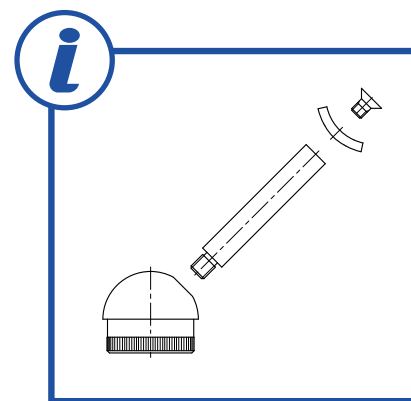
| AISI 316 | Cod. art. Art. no. | Per tubo For tube | A | H |
|------------|-----------------------|---|----------------|---|
| NEW | E02110 | Ø 26,9 x 2,0 mm - 1 7/128" dia. x 5/64" | 14 mm - 9/16" | |
| | E02111 | Ø 33,7 x 2,0 mm - 1 1/3" dia. x 5/64" | 17 mm - 21/32" | |
| | E02112 | Ø 42,4 x 2,0 mm - 1 2/3" dia. x 5/64" | 20 mm - 3/4" | |
| | E02116 | Ø 48,3 x 2,0 mm - 1 7/8" dia. x 5/64" | 20 mm - 3/4" | |

Massicci, satinati con zigrinatura e foro filettato a 45°
Solid, satin finish with knurling at 45°

| AISI 303 | Cod. art. Art. no. | Per tubo For tube | A | Foro filettato 45° Threaded hole 45° |
|----------|-----------------------|---------------------------------------|---|---|
| | E01211 | Ø 33,7 x 2,0 mm - 1 1/3" dia. x 5/64" | | M8 |
| | E01212 | Ø 42,4 x 2,0 mm - 1 2/3" dia. x 5/64" | | M8 |
| | E01216 | Ø 48,3 x 2,0 mm - 1 7/8" dia. x 5/64" | | M8 |

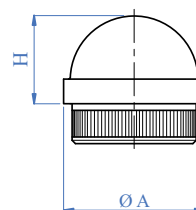


| AISI 316 | Cod. art. Art. no. | Per tubo For tube | A | Foro filettato 45° Threaded hole 45° |
|----------|-----------------------|---------------------------------------|---|---|
| | E02211 | Ø 33,7 x 2,0 mm - 1 1/3" dia. x 5/64" | | M8 |
| | E02212 | Ø 42,4 x 2,0 mm - 1 2/3" dia. x 5/64" | | M8 |
| | E02216 | Ø 48,3 x 2,0 mm - 1 7/8" dia. x 5/64" | | M8 |



Massicci, satinati con zigrinatura e semisfera più piccola
Solid, satin finish, with knurling and smaller semi-sphere

| AISI 303 | Cod. art. Art. no. | Per tubo For tube | A | H |
|----------|-----------------------|---------------------------------------|--------------|---|
| | E0111 | Ø 33,7 x 2,0 mm - 1 1/3" dia. x 5/64" | 20 mm - 3/4" | |
| | E011 | Ø 42,4 x 2,0 mm - 1 2/3" dia. x 5/64" | 20 mm - 3/4" | |



| AISI 316 | Cod. art. Art. no. | Per tubo For tube | A | H |
|------------|-----------------------|---------------------------------------|--------------|---|
| NEW | E011316 | Ø 33,7 x 2,0 mm - 1 1/3" dia. x 5/64" | 20 mm - 3/4" | |
| | E011316 | Ø 42,4 x 2,0 mm - 1 2/3" dia. x 5/64" | 20 mm - 3/4" | |

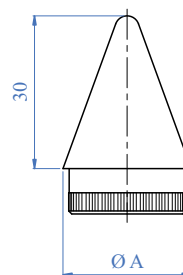


Tappi Terminali Sagomati - End Caps with Various Shapes

Satinati, con zigrinatura
Satin finish with knurling

NEW

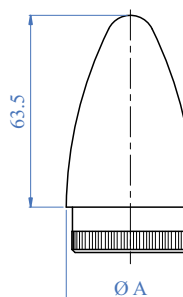
| AISI 303 | Cod. art. Art. no. | Per tubo For tube | A |
|----------|-----------------------|---------------------------------------|---|
| | E0119010 | Ø 33,7 x 2,0 mm - 1 1/3" dia. x 5/64" | |
| | E0119020 | Ø 42,4 x 2,0 mm - 1 2/3" dia. x 5/64" | |



Satinati, con zigrinatura
Satin finish with knurling

NEW

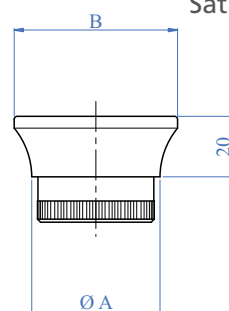
| AISI 303 | Cod. art. Art. no. | Per tubo For tube | A |
|----------|-----------------------|---------------------------------------|---|
| | E0119110 | Ø 33,7 x 2,0 mm - 1 1/3" dia. x 5/64" | |
| | E0119120 | Ø 42,4 x 2,0 mm - 1 2/3" dia. x 5/64" | |



Satinati, con zigrinatura
Satin finish with knurling

NEW

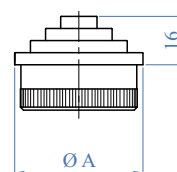
| AISI 303 | Cod. art. Art. no. | Per tubo For tube | A | B |
|----------|-----------------------|---------------------------------------|------------------|---|
| | E0119210 | Ø 33,7 x 2,0 mm - 1 1/3" dia. x 5/64" | 44 mm - 1 11/16" | |
| | E0119220 | Ø 42,4 x 2,0 mm - 1 2/3" dia. x 5/64" | 54 mm - 2 1/8" | |



Satinati, con zigrinatura
Satin finish with knurling

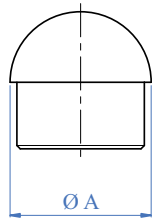
NEW

| AISI 303 | Cod. art. Art. no. | Per tubo For tube | A |
|----------|-----------------------|---------------------------------------|---|
| | E0119310 | Ø 33,7 x 2,0 mm - 1 1/3" dia. x 5/64" | |
| | E0119320 | Ø 42,4 x 2,0 mm - 1 2/3" dia. x 5/64" | |



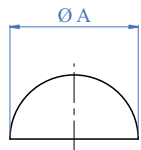
Tappi Terminali Semisferici - Semi-Spherical End Caps

Vuoto, satinato
Hollow, satin finish



| AISI 316 | Cod. art. Art. no. | Per tubo For tube | A |
|----------|-----------------------|---------------------------------------|---|
| | E464 | Ø 33,7 x 2,0 mm - 1 1/3" dia. x 5/64" | |
| | E464/26 | Ø 33,7 x 2,6 mm - 1 1/3" dia. x 3/32" | |
| | E465 | Ø 42,4 x 2,0 mm - 1 2/3" dia. x 5/64" | |
| | E465/26 | Ø 42,4 x 2,6 mm - 1 2/3" dia. x 3/32" | |
| | E466 | Ø 48,3 x 2,0 mm - 1 7/8" dia. x 5/64" | |
| | E466/26 | Ø 48,3 x 2,6 mm - 1 7/8" dia. x 3/32" | |
| | E467 | Ø 60,3 x 2,0 mm - 2 3/8" dia. x 5/64" | |
| | E467/26 | Ø 60,3 x 2,6 mm - 2 3/8" dia. x 3/32" | |
| | E468 | Ø 50,8 x 2,0 mm - 2" dia. x 5/64" | |

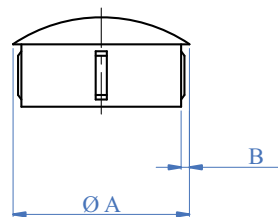
Grezze, spessore 1,5 mm
Unfinished, thk. 1/16"



| AISI 304 | Cod. art. Art. no. | Diametro Diameter | A |
|----------|-----------------------|-------------------------|---|
| | E040 | Ø 33,7 mm - 1 1/3" dia. | |
| | E041 | Ø 42,4 mm - 1 2/3" dia. | |
| | E042 | Ø 48,3 mm - 1 7/8" dia. | |

Tappi Terminali a Pressione per Tubo - Pressure Locked End Caps

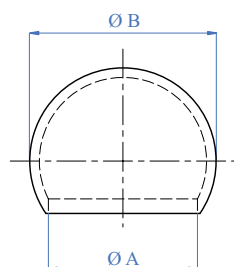
Bombato. Vuoto a pressione
Rounded pressure, locked



| AISI 316 | Cod. art. Art. no. | Per tubo For tube | A | Spessore tubo Tube thk. | B |
|----------|-----------------------|---------------------------|---|------------------------------|---|
| | E4094 | Ø 101,6 mm - 4" dia. | | 2,0 - 2,6 mm - 5/64" - 3/32" | |
| | E4093 | Ø 76,1 mm - 3" dia. | | 2,0 - 2,6 mm - 5/64" - 3/32" | |
| | E4092 | Ø 60,3 mm - 2 3/8" dia. | | 2,0 - 2,6 mm - 5/64" - 3/32" | |
| | E4091 | Ø 48,3 mm - 1 7/8" dia. | | 2,0 - 2,6 mm - 5/64" - 3/32" | |
| | E4090 | Ø 42,4 mm - 1 2/3" dia. | | 2,0 - 2,6 mm - 5/64" - 3/32" | |
| | E40957 | Ø 40,0 mm - 1 9/16" dia. | | 1,5 - 3,0 mm - 1/16" - 1/8" | |
| | E40956 | Ø 33,7 mm - 1 1/3" dia. | | 1,6 - 2,6 mm - 1/16" - 3/32" | |
| | E40955 | Ø 30,0 mm - 1 3/16" dia. | | 1,5 - 3,0 mm - 1/16" - 1/8" | |
| | E40954 | Ø 26,9 mm - 1 7/128" dia. | | 1,6 - 3,0 mm - 1/16" - 1/8" | |
| | E40953 | Ø 21,3 mm - 27/32" dia. | | 1,6 - 2,6 mm - 1/16" - 3/32" | |
| | E40952 | Ø 20,0 mm - 25/32" dia. | | 1,0 - 2,0 mm - 3/64" - 5/64" | |
| | E40951 | Ø 16,0 mm - 5/8" dia. | | 1,0 - 2,0 mm - 3/64" - 5/64" | |
| | E40950 | Ø 12,0 mm - 1/2" dia. | | 1,0 mm - 3/64" | |
| | E316 | Ø 42,4 mm - 1 2/3" dia. | | 1,5 - 2,6 mm - 1/16" - 3/32" | |
| | E315 | Ø 33,7 mm - 1 1/3" dia. | | 1,5 - 2,6 mm - 1/16" - 3/32" | |

Tappi Terminali a Sormonto - Overlapping End Caps

Terminale esterno
Overlapping end cap

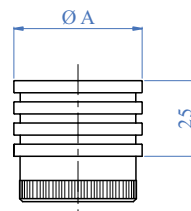


| AISI 316 | Cod. art. Art. no. | Per tubo For tube | A | B |
|----------|-----------------------|-------------------------|---|-------------------------|
| | E460 | Ø 33,7 mm - 1 1/3" dia. | | Ø 48 mm - 1 7/8" dia. |
| | E461 | Ø 42,4 mm - 1 2/3" dia. | | Ø 55 mm - 2 1/8" dia. |
| | E462 | Ø 48,3 mm - 1 7/8" dia. | | Ø 64 mm - 2 33/64" dia. |
| | E463 | Ø 60,3 mm - 2 3/8" dia. | | Ø 78 mm - 3 1/16" dia. |
| | E469 | Ø 50,8 mm - 2" dia. | | Ø 64 mm - 2 33/64" dia. |

Tappi Terminali Sagomati - End Caps with Various Shapes

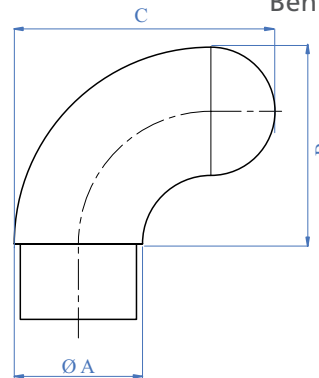
NEW

| AISI 303 | Cod. art. Art. no. | Per tubo For tube | A |
|----------|-----------------------|--|---|
| | E0119410 | Ø 33,7 x 2,0 mm 1 1/3" dia. x 5/64" | |
| | E0119420 | Ø 42,4 x 2,0 mm 1 2/3" dia. x 5/64" | |



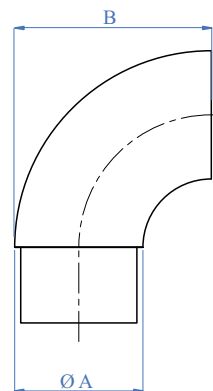
Curvato 90°, satinato, bombato
Bent 90°, rounded, satin finish

| AISI 316 | Cod. art. Art. no. | Per tubo For tube | A | B x C |
|----------|-----------------------|--|------------------------------------|-------|
| | E480 | Ø 33,7 x 2,0 mm 1 1/3" dia. x 5/64" | 70 x 57 mm 2 3/4" x 2 1/4" | |
| | E481 | Ø 42,4 x 2,0 mm 1 2/3" dia. x 5/64" | 80 x 60 mm 3 1/8" x 2 23/64" | |
| | E482 | Ø 48,3 x 2,0 mm 1 7/8" dia. x 5/64" | 100 x 75 mm 3 15/16" x 2 15/16" | |
| | E483 | Ø 60,3 x 2,0 mm 2 3/8" dia. x 5/64" | 115 x 85 mm 4 1/2" x 3 11/32" | |



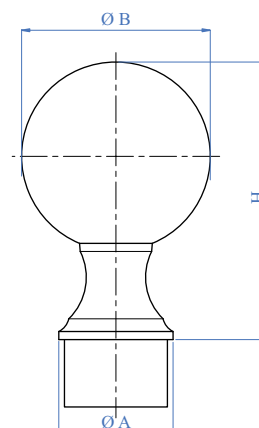
Curvato 90°, satinato, piatto
Bent 90°, flat, satin finish

| AISI 316 | Cod. art. Art. no. | Per tubo For tube | A | B |
|----------|-----------------------|--|-------------------|---|
| | E2021 | Ø 33,7 x 2,0 mm 1 1/3" dia. x 5/64" | 55 mm 2 1/8" | |
| | E452 | Ø 42,4 x 2,0 mm 1 2/3" dia. x 5/64" | 55 mm 2 31/64" | |



Con pomolo satinato
Knob, satin finish

| AISI 316 | Cod. art. Art. no. | Per tubo For tube | A | B | H |
|----------|-----------------------|--|-------------------------|------------------|---|
| | E457 | Ø 42,4 x 2,0 mm 1 2/3" dia. x 5/64" | Ø 70 mm 2 3/4" dia. | 103 mm 4 1/6" | |
| | E4571 | Ø 48,3 x 2,0 mm 1 7/8" dia. x 5/64" | Ø 80 mm 3 5/32" dia. | 115 mm 4 1/2" | |
| | E4572 | Ø 50,8 mm - 2" dia. | Ø 80 mm 3 5/32" dia. | 120 mm 4 3/4" | |



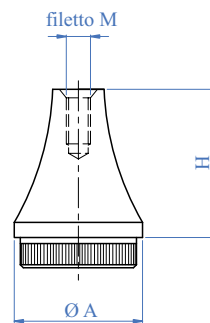


Tappi Terminali - End Caps

A punta con foro cieco filettato e zigrinatura
With knurling, pointed with internal threaded blind hole

| AISI 303 | Cod. art. Art. no. | Per tubo For tube | A | H | Filetto M Thread M |
|----------|-----------------------|---------------------------------------|---|------------------|-----------------------|
| | E0101 | Ø 33,7 x 2,0 mm - 1 1/3" dia. x 5/64" | | 30 mm - 1 3/16" | M8 |
| | E010 | Ø 42,4 x 2,0 mm - 1 2/3" dia. x 5/64" | | 47 mm - 1 13/16" | M10 |

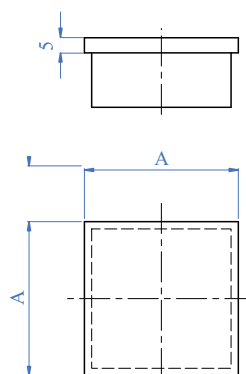
(Da combinare alla sfera con foro filettato)
(To be combined with spheres)



Tappi Terminali per Tubo Quadro - End Caps for Square Tubes

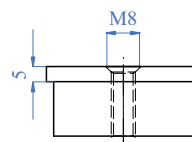
Per tubo quadro, satinato
For square tube, satin finish

| AISI 316 | Cod. art. Art. no. | Per tubo For tube | AxA |
|----------|-----------------------|---|-----|
| | E4200 | 20 x 20 x 1,5 mm - 25/32" x 25/32" x 1/16" | |
| | E4210 | 25 x 25 x 2,0 mm - 1" x 1" x 5/64" | |
| | E4220 | 30 x 30 x 2,0 mm - 1 3/16" x 1 3/16" x 5/64" | |
| | E4230 | 40 x 40 x 2,0 mm - 1 9/16" x 1 9/16" x 5/64" | |
| | E4240 | 50 x 50 x 2,0 mm - 2" x 2" x 5/64" | |
| | E4250 | 60 x 60 x 2,0 mm - 2 23/64" x 1 9/16" x 5/64" | |



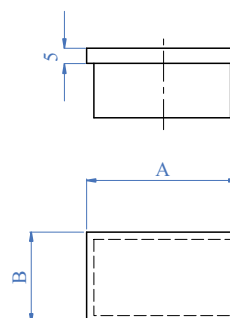
Per tubo quadro, satinato con foro filettato
For square tube, satin finish, with threaded hole

| AISI 316 | Cod. art. Art. no. | Per tubo For tube | AxA |
|----------|-----------------------|--|-----|
| | E42201 | 30 x 30 x 2,0 mm - 1 3/16" x 1 3/16" x 5/64" | |
| | E42301 | 40 x 40 x 2,0 mm - 1 9/16" x 1 9/16" x 5/64" | |

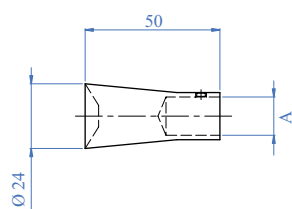


Per tubo rettangolare, satinato
For rectangular tubes, satin finish

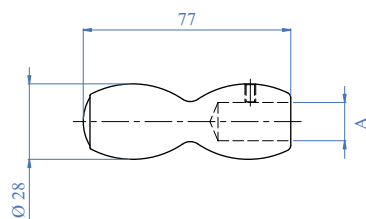
| AISI 316 | Cod. art. Art. no. | Per tubo For tube | AxB |
|----------|-----------------------|---|-----|
| | E4251 | 30 x 20 x 2,0 mm - 1 3/16" x 25/32" x 5/64" | |
| | E4252 | 40 x 20 x 2,0 mm - 1 9/16" x 25/32" x 5/64" | |
| | E4253 | 40 x 30 x 2,0 mm - 1 9/16" x 1 3/16" x 5/64" | |
| | E4254 | 50 x 30 x 2,0 mm - 2" x 1 3/16" x 5/64" | |
| | E4255 | 60 x 60 x 2,0 mm - 2 23/64" x 1 9/16" x 5/64" | |



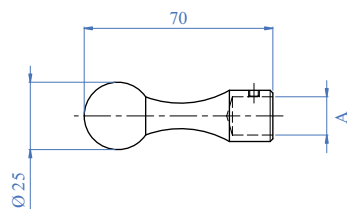
Tappi Terminali per Tondino - End Caps for Round Bars



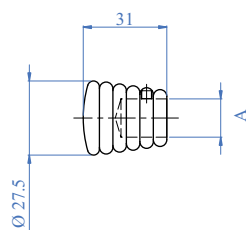
| AISI 303 | Cod. art. Art. no. | Per tondino For round bar | A |
|------------|-----------------------|------------------------------|---|
| NEW | E910510 | Ø 12 mm - 1/2" dia. | |
| | E9105 | Ø 14 mm - 9/16" dia. | |



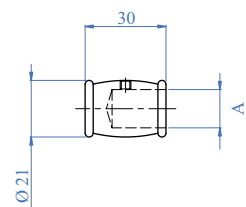
| AISI 303 | Cod. art. Art. no. | Per tondino For round bar | A |
|------------|-----------------------|------------------------------|---|
| NEW | E911010 | Ø 12 mm - 1/2" dia. | |
| | E9110 | Ø 14 mm - 9/16" dia. | |



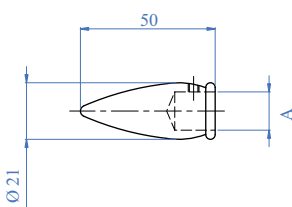
| AISI 303 | Cod. art. Art. no. | Per tondino For round bar | A |
|------------|-----------------------|------------------------------|---|
| NEW | E912010 | Ø 12 mm - 1/2" dia. | |
| | E9120 | Ø 14 mm - 9/16" dia. | |



| AISI 303 | Cod. art. Art. no. | Per tondino For round bar | A |
|------------|-----------------------|------------------------------|---|
| NEW | E911510 | Ø 12 mm - 1/2" dia. | |
| | E9115 | Ø 14 mm - 9/16" dia. | |



| AISI 303 | Cod. art. Art. no. | Per tondino For round bar | A |
|------------|-----------------------|------------------------------|---|
| NEW | E912510 | Ø 12 mm - 1/2" dia. | |
| | E9125 | Ø 14 mm - 9/16" dia. | |



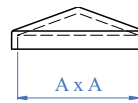
| AISI 303 | Cod. art. Art. no. | Per tondino For round bar | A |
|------------|-----------------------|------------------------------|---|
| NEW | E913010 | Ø 12 mm - 1/2" dia. | |
| | E9130 | Ø 14 mm - 9/16" dia. | |

Tappi Terminali a Piramide - Pyramid Shape Post Caps



Per tubo quadro
For square tube

| AISI 304 | Cod. art. Art. no. | Superficie Surface | Dimensioni Dimensions A x A |
|----------|-----------------------|-----------------------|------------------------------------|
| | E039 | grezzo - raw | 30 x 30 mm - 1 3/16" x 1 3/16" |
| | E0391 | grezzo - raw | 40 x 40 mm - 1 9/16" x 1 9/16" |
| | E0392 | grezzo - raw | 50 x 50 mm - 2" x 2" |
| | E0393 | grezzo - raw | 60 x 60 mm - 2 23/64" x 2 23/64" |
| | E0394 | grezzo - raw | 80 x 80 mm - 3 5/32" x 3 5/32" |
| | E0395 | grezzo - raw | 100 x 100 mm - 3 15/16" x 3 15/16" |
| | E0396 | grezzo - raw | 120 x 120 mm - 4 23/32" x 4 23/32" |
| | E0397 | grezzo - raw | 150 x 150 mm - 5 29/32" x 5 29/32" |



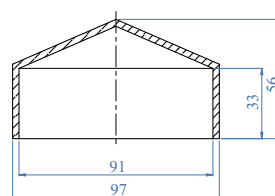
| AISI 316 | Cod. art. Art. no. | Superficie Surface | Dimensioni Dimensions A x A |
|----------|-----------------------|-------------------------|------------------------------------|
| | E4150 | satinato - satin finish | 30 x 30 mm - 1 3/16" x 1 3/16" |
| | E4151 | satinato - satin finish | 40 x 40 mm - 1 9/16" x 1 9/16" |
| | E4152 | satinato - satin finish | 50 x 50 mm - 2" x 2" |
| | E4153 | satinato - satin finish | 60 x 60 mm - 2 23/64" x 2 23/64" |
| | E4154 | satinato - satin finish | 80 x 80 mm - 3 5/32" x 3 5/32" |
| | E4155 | satinato - satin finish | 100 x 100 mm - 3 15/16" x 3 15/16" |



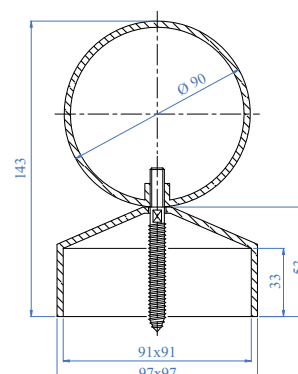
Copripilastrì - Pillar Covers

Per tubo quadro, satinato
For square tube, satin finish

| AISI 316 | Cod. art. Art. no. | Per tubo For tube |
|----------|-----------------------|---------------------------------|
| | E4165 | 90 x 90 mm 3 9/16" x 3 9/16" |



| AISI 316 | Cod. art. Art. no. | Per tubo For tube |
|----------|-----------------------|---------------------------------|
| | E4160 | 90 x 90 mm 3 9/16" x 3 9/16" |



Satinato
Satin finish

Sfere Vuote - Hollow Spheres

Sfere vuote con foro filettato, lucidate o placcate oro

Hollow spheres, with threaded inserts, in polished silver or gold plated



| AISI 304 | Cod. art. Art. no. | Dimensioni Dimensions | Superficie Surface | Filetto Thread |
|----------|-----------------------|--------------------------|--------------------------|-------------------|
| | E0701/GO | Ø 30 mm - 1 3/16" dia. | dorato - gold plated | M6 |
| | E0701/HP | Ø 30 mm - 1 3/16" dia. | lucido - mirror polished | M6 |
| | E0702/GO | Ø 40 mm - 1 9/16" dia. | dorato - gold plated | M6 |
| | E0702/HP | Ø 40 mm - 1 9/16" dia. | lucido - mirror polished | M6 |
| | E070/GO | Ø 50 mm - 2" dia. | dorato - gold plated | M6 |
| | E070/HP | Ø 50 mm - 2" dia. | lucido - mirror polished | M6 |
| | E071/GO | Ø 60 mm - 2 23/64" dia. | dorato - gold plated | M8 |
| | E071/HP | Ø 60 mm - 2 23/64" dia. | lucido - mirror polished | M8 |
| | E072/HP | Ø 70 mm - 2 3/4" dia. | lucido - mirror polished | M8 |
| | E073/GO | Ø 80 mm - 3 5/32" dia. | dorato - gold plated | M8 |
| | E073/HP | Ø 80 mm - 3 5/32" dia. | lucido - mirror polished | M8 |
| | E074/HP | Ø 90 mm - 3 9/16" dia. | lucido - mirror polished | M8 |
| | E075/GO | Ø 100 mm - 3 15/16" dia. | dorato - gold plated | M10 |
| | E075/HP | Ø 100 mm - 3 15/16" dia. | lucido - mirror polished | M10 |
| | E076/GO | Ø 120 mm - 4 3/4" dia. | dorato - gold plated | M10 |
| | E076/HP | Ø 120 mm - 4 3/4" dia. | lucido - mirror polished | M10 |

Sfere vuote con foro filettato, satinato

Hollow spheres, with threaded inserts, satin finish

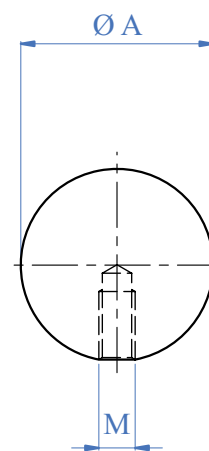
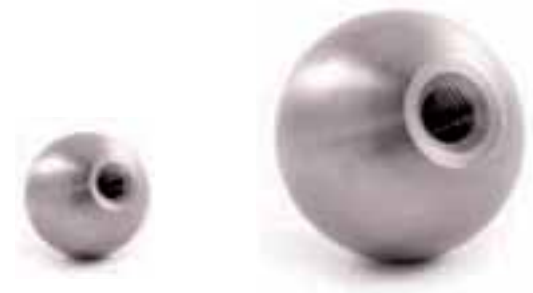


| AISI 304 | Cod. art. Art. no. | Dimensioni Dimensions | Superficie Surface | Filetto Thread |
|----------|-----------------------|--------------------------|-------------------------|-------------------|
| | E072304 | Ø 70 mm - 2 3/4" dia. | satinato - satin finish | M8 |
| | E075304 | Ø 100 mm - 3 15/16" dia. | satinato - satin finish | M10 |

| AISI 316 | Cod. art. Art. no. | Dimensioni Dimensions | Superficie Surface | Filetto Thread |
|----------|-----------------------|--------------------------|-------------------------|-------------------|
| | E0701 | Ø 30 mm - 1 3/16" dia. | satinato - satin finish | M6 |
| | E0702 | Ø 40 mm - 1 9/16" dia. | satinato - satin finish | M6 |
| | E070 | Ø 50 mm - 2" dia. | satinato - satin finish | M6 |
| | E071 | Ø 60 mm - 2 23/64" dia. | satinato - satin finish | M8 |
| | E072 | Ø 70 mm - 2 3/4" dia. | satinato - satin finish | M8 |
| | E073 | Ø 80 mm - 3 5/32" dia. | satinato - satin finish | M8 |
| | E074 | Ø 90 mm - 3 9/16" dia. | satinato - satin finish | M8 |
| | E075 | Ø 100 mm - 3 15/16" dia. | satinato - satin finish | M10 |
| | E076 | Ø 120 mm - 4 3/4" dia. | satinato - satin finish | M10 |
| | E077 | Ø 150 mm - 5 29/32" dia. | satinato - satin finish | M10 |
| | E078 | Ø 200 mm - 7 7/8" dia. | satinato - satin finish | M10 |

Sfere Piene Filettate - Solid Spheres with Threaded Inserts

| AISI 303 | Cod. art. Art. no. | Dimensioni Dimensions | A | Filetto Thread | M |
|----------|-----------------------|---|---|-------------------|---|
| | E012 | Ø 60 mm foro cieco filettato 2 23/64" dia. threaded blind hole | | M10 | |
| | E01201 | Ø 55 mm foro cieco filettato 2 11/64" dia. threaded blind hole | | M10 | |
| | E0120 | Ø 50 mm foro cieco filettato 2" dia. threaded blind hole | | M8 | |
| | E0121 | Ø 40 mm foro cieco filettato 1 9/16" dia. threaded blind hole | | M8 | |
| | E0122 | Ø 30 mm foro cieco filettato 1 3/16" dia. threaded blind hole | | M6 | |
| | E0123 | Ø 25 mm foro cieco filettato 1" dia. threaded blind hole | | M6 | |
| | E0124 | Ø 20 mm foro cieco filettato - 25/32" dia. threaded blind hole | | M6 | |
| | E0125 | Ø 15 mm foro cieco filettato 19/32" dia. threaded blind hole | | M6 | |



| AISI 316 | Cod. art. Art. no. | Dimensioni Dimensions | A | Filetto Thread | M |
|----------|-----------------------|--|---|-------------------|---|
| | E4300 | Ø 60 mm foro cieco filettato 2 23/64" dia. threaded blind hole | | M10 | |
| | E4301 | Ø 50 mm foro cieco filettato 2" dia. threaded blind hole | | M8 | |
| | E4302 | Ø 40 mm foro cieco filettato 1 9/16" dia. threaded blind hole | | M8 | |

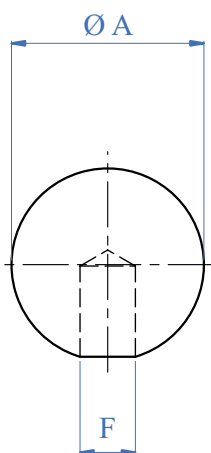


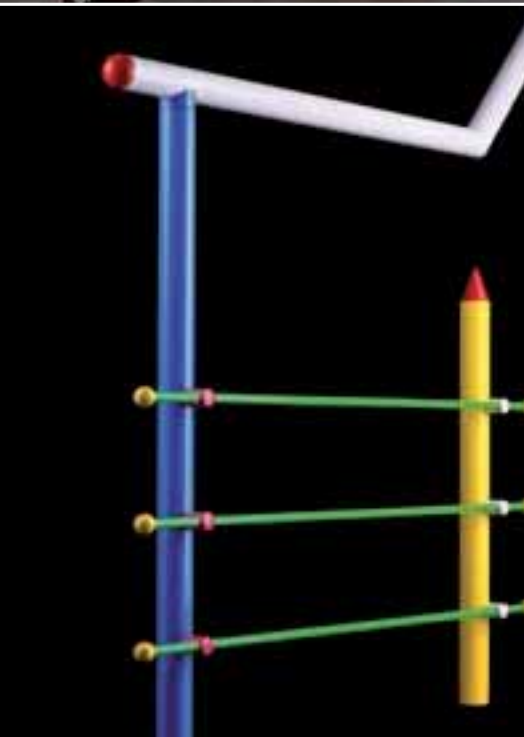
Sfere Piene con Foro - Solid Spheres with Holes



| AISI 303 | Cod. art. | Dimensioni | A | Foro | F |
|----------|-----------|--|---|--------------------------|---|
| | Art. no. | Dimensions | | Hole | |
| | E0126 | Ø 20 mm foro cieco 25/32" dia. blind hole | | Ø 10,2 mm 13/32" dia. | |
| | E01261 | Ø 20 mm foro cieco 25/32" dia. blind hole | | Ø 12,2 mm 1/2" dia. | |
| | E01262 | Ø 20 mm foro passante 25/32" dia. hole | | Ø 10,2 mm 13/32" dia. | |
| | E01292 | Ø 25 mm foro cieco 1" dia. blind hole | | Ø 10,2 mm 13/32" dia. | |
| | E0127 | Ø 25 mm foro cieco 1" dia. blind hole | | Ø 12,2 mm 1/2" dia. | |
| | E0128 | Ø 25 mm foro cieco 1" dia. blind hole | | Ø 14,2 mm 9/16" dia. | |
| | E0129 | Ø 25 mm foro passante 1" dia. hole | | Ø 12,2 mm 1/2" dia. | |
| | E01281 | Ø 25 mm foro passante 1" dia. hole | | Ø 14,2 mm 9/16" dia. | |
| | E01302 | Ø 30 mm foro cieco 1 3/16" dia. blind hole | | Ø 12,2 mm 1/2" dia. | |
| | E01300 | Ø 30 mm foro passante 1 3/16" dia. hole | | Ø 10,2 mm 13/32" dia. | |
| | E0130 | Ø 30 mm foro passante 1 3/16" dia. hole | | Ø 12,2 mm 1/2" dia. | |
| | E01301 | Ø 30 mm foro passante 1 3/16" dia. hole | | Ø 14,2 mm 9/16" dia. | |
| | E0130/SO | Ø 30 mm foro passante con grano laterale 1 3/16" dia. hole with set screw | | Ø 12,2 mm 1/2" dia. | |
| | E01301/SO | Ø 30 mm foro passante con grano laterale 1 3/16" dia. hole with set screw | | Ø 14,2 mm 9/16" dia. | |

| AISI 316 | Cod. art. | Dimensioni | A | Foro | F |
|----------|-----------|--|---|--------------------------|---|
| | Art. no. | Dimensions | | Hole | |
| | E4307 | Ø 20 mm foro cieco 25/32" dia. blind hole | | Ø 10,2 mm 13/32" dia. | |
| | E4308 | Ø 25 mm foro cieco 1" dia. blind hole | | Ø 12,2 mm 1/2" dia. | |
| | E4309 | Ø 25 mm foro cieco 1" dia. blind hole | | Ø 14,2 mm 9/16" dia. | |
| | E4311 | Ø 25 mm foro passante 1" dia. hole | | Ø 12,2 mm 1/2" dia. | |
| | E4312 | Ø 25 mm foro passante 1" dia. hole | | Ø 14,2 mm 9/16" dia. | |
| | E4313 | Ø 30 mm foro passante 1 3/16" dia. hole | | Ø 10,2 mm 13/32" dia. | |
| | E4314 | Ø 30 mm foro passante 1 3/16" dia. hole | | Ø 12,2 mm 1/2" dia. | |
| | E4315 | Ø 30 mm foro passante 1 3/16" dia. hole | | Ø 14,2 mm 9/16" dia. | |





ind.i.a.[®] S. P. A.

INDUSTRIA ITALIANA ARTEFERRO

VIA VICENZA, 6/14

36034 MALO (VICENZA) ITALIA

TELEFONO (+39) 0445 580 580

FAX (+39) 0445 580 874

E-mail:india@arteferro.com

www.ironews.com - www.ilgrandefabbro.com

www.arteferro.com



indital[®]

7947 MESA ROAD - HOUSTON
TEXAS 77028 - U.S.A.
PHONE: (+1) (713) 694-6065 / 1-800-772-4706
FAX: (+1) (713) 694-2055
www.indital.com - forgings@indital.com

U.S.A.

ARTEFERRO Miami LLC.

2955 N.W. 75th STREET
MIAMI, FLORIDA 33147 - USA
PHONE: (+1) (305) 836-9232 / 1-877-723-6743
FAX: (+1) (305) 836-4113
www.arteferromiami.com info@arteferromiami.com

U.S.A.

ARTEFERROSUD S.R.L.

Via Piana Alvanella 83024 MONTEFORTE IRPINO (AV)
Tel. (+39) 0825 68 00 81
Fax (+39) 0825 68 34 98
(Per Campania - Puglia - Calabria - Basilicata - Molise)
www.arteferrosud.it info@arteferrosud.it

ITALY

ind.i.a.

Z.A.E. LA BAUME RN 113 - 34290 SERVIAN FRANCE
TEL (+33) (0) 4.67.39.42.81 (lignes groupées)
Fax (+33) (0) 4.67.39.20.90
www.franceindia.com
france.india@wanadoo.fr

FRANCE

ind.i.a.

28500 ARGANDA DEL REY (MADRID) - ESPAÑA
C/. ABEDUL, 43 - Poligono "EL GUJAR"
TEL (+34) (91) 8701897 - 8700819
FAX (+34) (91) 8700820
info@arteferro.es www.arteferro.es

ESPAÑA S.L.

ARTEFERRO Skandinavien AB

SWEDEN: SJÖTULLSG. 3 - S-602 28 NORRKÖPING
TEL (+46) (0) 11182323 - FAX (+46) (0) 11182328
DENMARK: HESSELAGER 19 - DK-2605 BRØNDBY
TEL +45 4362 2563 - FAX +45 4362 2535
www.arteferro.se - info@arteferro.se

SWEDEN - DENMARK

ARTEFERRO Dohomont d.o.o.

SIRKOVIŠE bb 40324 GORICAN - HRVATSKA
PHONE (+385) (0)40 601-222
Fax PHONE (+385) (0)40 601-600
www.arteferro-dohomont.hr
info@arteferro-dohomont.hr

HRVATSKA

Mobilforge S.A.

Targoviste - Romania Soseaua Gaesti, (sat Colanu)
Judetul Dambavita
Tel. 004 0751060204, (004)0745395590
Fax (004)0745731210
E-mail: info@mobilforge.com

ROMANIA

ООО "ARTEFERRO Russia"

603092 Nizhny Novgorod (Russia)
Moskovskoje shosse, 320 B
TEL (+7) (831) 296-19-99 FAX: (+7) (831) 279-28-63
www.arteferro.ru - www.arteferrossia.com
info@arteferrossia.com

RUSSIA

ARTEFERRO Ukraina

5, AVTOPARKOVA, 02660 Kiev - Ukraine
Tel.: (+38) (044) 4920331
Fax: (+38) (044) 4920332
E-mail: arteferroukraina@svitonline.com
www.arteferroukraina.com

UKRAINE

ind.i.a.

ul. Gierdziejewskiego 7
02-495 Warszawa POLAND
Tel +48 (22) 397-79-40
Fax +48 (22) 397-21-55
info@indiapoland.com - www.indiapoland.com

POLAND S.p.A.

ARTEFERRO Monterrey S.A. DE C.V.

Av. E. Martinez Lara # 117 Parque Industrial MILMEX
Carretera Sta. Rosa Km. 3 Apodaca,
Nuevo León C.P. 66637
Teléfono: (81) 1295-5094 / 1295-5095
Fax: (81) 1295-5097
info@arteferromonterrey.com
www.arteferromonterrey.com

MEXICO

ind.i.a.

RUA PADRE FEIJÓ, 480 CEP 95190-000
SÃO MARCOS / RS BRASIL
TEL - FAX (+55) (0) 54 32911416
www.arteferrobrazil.com.br
arteferro@arteferrobrazil.com.br

BRASIL Ltda

ARTEFERRO Argentina S.A.

Suarez 760
(1162) Capital Federal Buenos Aires
Republica Argentina
TEL./Fax (+54) 11 43012637

ARGENTINA

ARTEFERRO Chile S.A.

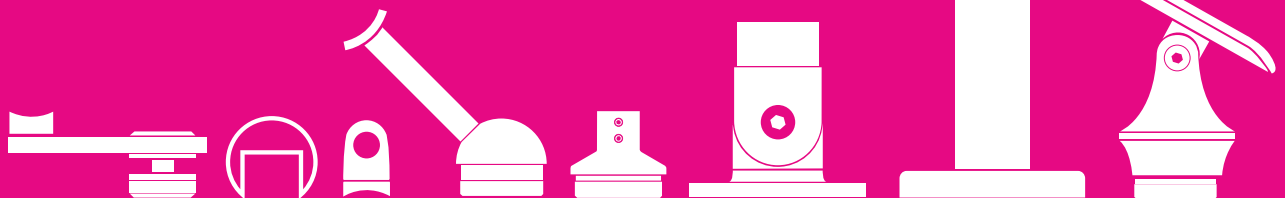
LOS ARRAYANES 250, COMUNA DE COLINA,
SANTIAGO DE CHILE

CHILE

ARTEFERRO BOTNIC INTERNATIONAL LTD

Block C/5 Lagos State small scale Industrial Estate,
Fatai Atere Way, Matori, Lagos
Tel. 00234 1 891 4155 - 00234 1 2799 093-4
www.arteferrobotnic.com
info@arteferrobotnic.com

NIGERIA



WWW.ARTEFERRO.COM