

# • SYSTEMA INOX® •

- Supporti Tondini
- Round Bar Holders

by *ind.i.a.*

Per un'architettura  
trasparente, moderna ma  
sempre attuale.

La migliore soluzione  
sono i supporti tondini  
ARTEFERRO INOX®

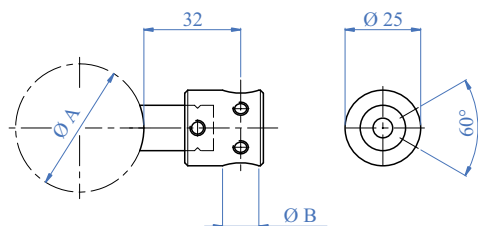
For a clear, modern  
but always topical  
Architecture, the  
ARTEFERRO INOX®  
supports for round  
bars are the best  
solution

**102**  
NUOVI PRODOTTI  
NEW PRODUCTS



## Supporti Tondino - Round Bar Holders

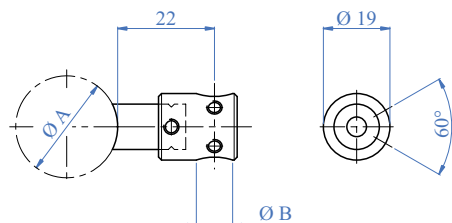
Composto da 2 pezzi e grani per il fermo del tondino  
Complete with 2 pieces and threaded lock for rod



AISI 303	Cod. art. Art. no.	Per tubo For tube	A	Foro Hole	B	Descrizione Description
	E006	Ø 33,7 - Ø 42,4 mm 1 1/3" dia. - 1 2/3" dia.		Ø 12,2 mm 1/2" dia.		Passante Through
	E0061	Ø 33,7 - Ø 42,4 mm 1 1/3" dia. - 1 2/3" dia.		Ø 12,2 mm 1/2" dia.		Cieco - sx Blind - L
	E0062	Ø 33,7 - Ø 42,4 mm 1 1/3" dia. - 1 2/3" dia.		Ø 12,2 mm 1/2" dia.		Cieco - dx Blind - R
	E0066	Ø 33,7 - Ø 42,4 mm 1 1/3" dia. - 1 2/3" dia.		Ø 14,2 mm 9/16" dia.		Passante Through
	E0067	Ø 33,7 - Ø 42,4 mm 1 1/3" dia. - 1 2/3" dia.		Ø 14,2 mm 9/16" dia.		Cieco - sx Blind - L
	E0068	Ø 33,7 - Ø 42,4 mm 1 1/3" dia. - 1 2/3" dia.		Ø 14,2 mm 9/16" dia.		Cieco - dx Blind - R
	E00666	Ø 33,7 - Ø 42,4 mm 1 1/3" dia. - 1 2/3" dia.		Ø 12,2 mm 1/2" dia.		Passante - Through Solo per tubo quadro Only for square tube

AISI 316	Cod. art. Art. no.	Per tubo For tube	A	Foro Hole	B	Descrizione Description
	E006316	Ø 33,7 - Ø 42,4 mm 1 1/3" dia. - 1 2/3" dia.		Ø 12,2 mm 1/2" dia.		Passante Through
	E0066316	Ø 33,7 - Ø 42,4 mm 1 1/3" dia. - 1 2/3" dia.		Ø 14,2 mm 9/16" dia.		Passante Through

Composto da 2 pezzi e grani per il fermo del tondino  
Complete with 2 pieces and threaded lock for rod



AISI 303	Cod. art. Art. no.	Per tubo For tube	A	Foro Hole	B	Descrizione Description
	E0063	Ø 33,7 - Ø 42,4 mm 1 1/3" dia. - 1 2/3" dia.		Ø 10,2 mm 13/32" dia.		Passante Through
	E0064	Ø 33,7 - Ø 42,4 mm 1 1/3" dia. - 1 2/3" dia.		Ø 10,2 mm 13/32" dia.		Cieco - sx Blind - L
	E0065	Ø 33,7 - Ø 42,4 mm 1 1/3" dia. - 1 2/3" dia.		Ø 10,2 mm 13/32" dia.		Cieco - dx Blind - R

AISI 316	Cod. art. Art. no.	Per tubo For tube	A	Foro Hole	B	Descrizione Description
<b>NEW</b>	E0063316	Ø 33,7 - Ø 42,4 mm 1 1/3" dia. - 1 2/3" dia.		Ø 10,2 mm 13/32" dia.		Passante Through
<b>NEW</b>	E0064316	Ø 33,7 - Ø 42,4 mm 1 1/3" dia. - 1 2/3" dia.		Ø 10,2 mm 13/32" dia.		Cieco - sx Blind - L
<b>NEW</b>	E0065316	Ø 33,7 - Ø 42,4 mm 1 1/3" dia. - 1 2/3" dia.		Ø 10,2 mm 13/32" dia.		Cieco - dx Blind - R



**i** foro filettato per grani vite a testa svasata inox M5 o M6  
threaded hole for set screw stainless steel M5 or M6

praticare fori su tubo e filettarli da M5 o M6  
drill holes on tube and drive thread of M5 or M6

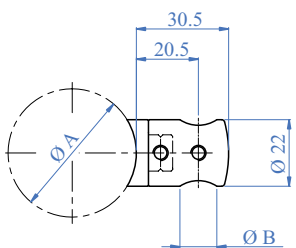
**N.B.** L'art. E0066 è composto da 1 + 2 . La vite viene fornita a parte. I grani filettati sono già avvitati nell'art. E0066

**Attention:** art. E0066 is composed by parts 1 + 2. The screw is supplied separately. The set screws are prescrewed on art. E0066.

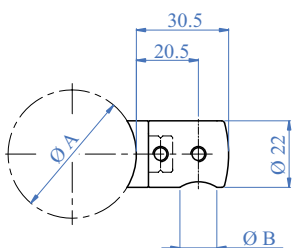


## Supporti Tondino - Round Bar Holders

Composto da 2 pezzi e grani per il fermo del tondino  
Complete with 2 pieces and threaded lock for rod

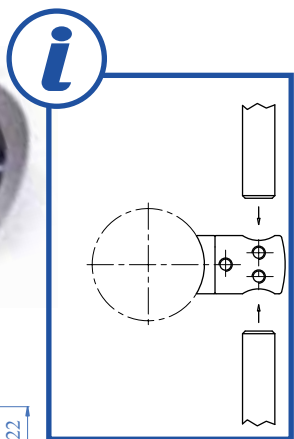
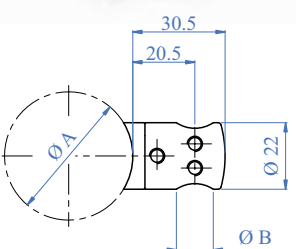
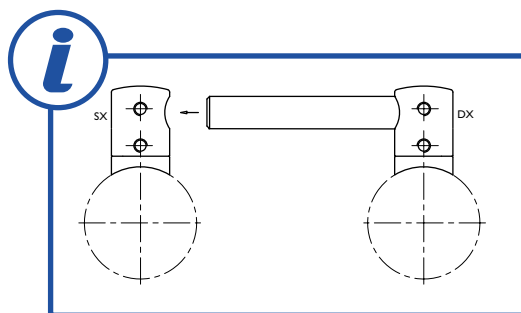


AISI 316 Art. no	AISI 303 Art. no	Per tubo For tube	A	Foro Hole	B
E0069101316	E0069101	Ø 33,7 mm - 1 1/3" dia		Ø 10,2 mm passante - 13/32" dia. through	
E006911316	E006911	Ø 33,7 mm - 1 1/3" dia		Ø 12,2 mm passante - 1/2" dia. through	
E006913316	E006913	Ø 33,7 mm - 1 1/3" dia		Ø 14,2 mm passante - 9/16" dia. through	
E006910316	E006910	Ø 42,4 mm - 1 2/3" dia.		Ø 10,2 mm passante - 13/32" dia. through	
E4042	E0069	Ø 42,4 mm - 1 2/3" dia.		Ø 12,2 mm passante - 1/2" dia. through	
E4040	E00691	Ø 42,4 mm - 1 2/3" dia.		Ø 14,2 mm passante - 9/16" dia. through	
E4041	E006916	Ø 48,3 mm - 1 7/8" dia.		Ø 12,2 mm passante - 1/2" dia. through	
E4043	E006912	Ø 48,3 mm - 1 7/8" dia.		Ø 14,2 mm passante - 9/16" dia. through	
E006914316	E006914	Ø 50,8 - 2" dia.		Ø 12,2 mm passante - 1/2" dia. through	
E006915316	E006915	Ø 50,8 - 2" dia.		Ø 14,2 mm passante - 9/16" dia. through	
E40440	E006917	Superficie piana - Flat face		Ø 10,2 mm passante - 13/32" dia. through	
E4044	E00692	Superficie piana - Flat face		Ø 12,2 mm passante - 1/2" dia. through	
E4045	E006921	Superficie piana - Flat face		Ø 14,2 mm passante - 9/16" dia. through	



NEW

AISI 316 Art. no	AISI 303 Art. no	Per tubo For tube	A	Foro Hole	B
E40491	E006923	Ø 42,4 mm - 1 2/3" dia.		Ø 10,2 mm cieco dx - 13/32" dia. blind right	
E40490	E006924	Ø 42,4 mm - 1 2/3" dia.		Ø 10,2 mm cieco sx - 13/32" dia. blind left	
E40493	E0069100	Ø 42,4 mm - 1 2/3" dia.		Ø 12,2 mm cieco dx - 1/2" dia. blind right	
E40492	E006922	Ø 42,4 mm - 1 2/3" dia.		Ø 12,2 mm cieco sx - 1/2" dia. blind left	



AISI 303 Cod. art. Art. no.	Per tubo For tube	A	Foro Hole	B
E00692100	Ø 33,7 mm - 1 1/3" dia.		Ø 10,2 mm passante - 13/32" dia. through	
E00692200	Ø 33,7 mm - 1 1/3" dia.		Ø 12,2 mm passante - 1/2" dia. through	
E00692300	Ø 33,7 mm - 1 1/3" dia.		Ø 14,2 mm passante - 9/16" dia. through	
E00693100	Ø 42,4 mm - 1 2/3" dia.		Ø 10,2 mm passante - 13/32" dia. through	
E00693200	Ø 42,4 mm - 1 2/3" dia.		Ø 12,2 mm passante - 1/2" dia. through	
E00693300	Ø 42,4 mm - 1 2/3" dia.		Ø 14,2 mm passante - 9/16" dia. through	
E00693000	Superficie piana - Flat face		Ø 14,2 mm passante - 9/16" dia. through	

AISI 316 Cod. art. Art. no.	Per tubo For tube	A	Foro Hole	B
E40422100	Ø 33,7 mm - 1 1/3" dia.		Ø 10,2 mm passante - 13/32" dia. through	
E40422200	Ø 33,7 mm - 1 1/3" dia.		Ø 12,2 mm passante - 1/2" dia. through	
E40422300	Ø 33,7 mm - 1 1/3" dia.		Ø 14,2 mm passante - 9/16" dia. through	
E40423100	Ø 42,4 mm - 1 2/3" dia.		Ø 10,2 mm passante - 13/32" dia. through	
E40423200	Ø 42,4 mm - 1 2/3" dia.		Ø 12,2 mm passante - 1/2" dia. through	
E40423300	Ø 42,4 mm - 1 2/3" dia.		Ø 14,2 mm passante - 9/16" dia. through	
E40423000	Superficie piana - Flat face		Ø 14,2 mm passante - 9/16" dia. through	



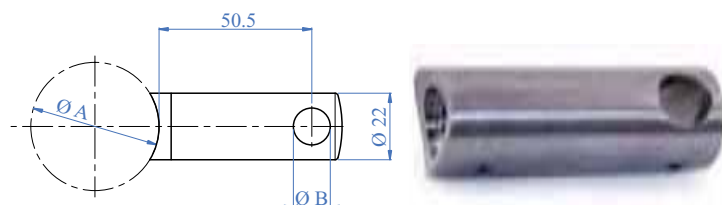
ARTEFERRO

## Supporti Tondino - Round Bar Holders

Composto in 2 pezzi completo di grani filettati  
Two components, complete with screws set

AISI 303	Cod. art. Art. no.	Per tubo For tube	A	Foro Hole	B
	E006931	Ø 42,4 mm - 1 2/3" dia.		Ø 12,2 mm - 1/2" dia.	
	E00693	Ø 42,4 mm - 1 2/3" dia.		Ø 14,2 mm - 9/16" dia.	
	E006932	Ø 48,3 mm - 1 7/8" dia.		Ø 14,2 mm - 9/16" dia.	
	E006934	Quadro - Square		Ø 12,2 mm - 1/2" dia.	
	E006935	Quadro - Square		Ø 14,2 mm - 9/16" dia.	

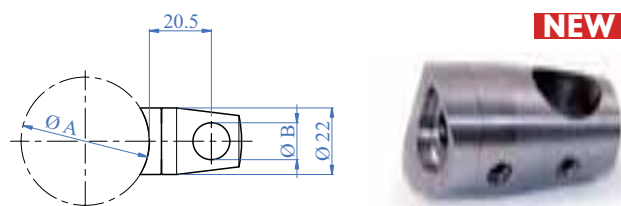
AISI 316	Cod. art. Art. no.	Per tubo For tube	A	Foro Hole	B
<b>NEW</b>	E006931316	Ø 42,4 mm - 1 2/3" dia.		Ø 12,2 mm - 1/2" dia.	
	E00693316	Ø 42,4 mm - 1 2/3" dia.		Ø 14,2 mm - 9/16" dia.	
	E006932316	Ø 48,3 mm - 1 7/8" dia.		Ø 14,2 mm - 9/16" dia.	
	E006934316	Quadro - Square		Ø 12,2 mm - 1/2" dia.	
	E006935316	Quadro - Square		Ø 14,2 mm - 9/16" dia.	



AISI 303	Cod. art. Art. no.	Per tubo For tube	A	Foro Hole	B
	E00698100	Ø 33,7 mm - 1 1/3" dia.		Ø 10,2 mm - 13/32" dia.	
	E00698200	Ø 33,7 mm - 1 1/3" dia.		Ø 12,2 mm - 1/2" dia.	
	E00698300	Ø 42,4 mm - 1 2/3" dia.		Ø 10,2 mm - 13/32" dia.	
	E00698400	Ø 42,4 mm - 1 2/3" dia.		Ø 12,2 mm - 1/2" dia.	

AISI 316	Cod. art. Art. no.	Per tubo For tube	A	Foro Hole	B
	E40428100	Ø 33,7 mm - 1 1/3" dia.		Ø 10,2 mm - 13/32" dia.	
	E40428200	Ø 33,7 mm - 1 1/3" dia.		Ø 12,2 mm - 1/2" dia.	
	E40428300	Ø 42,4 mm - 1 2/3" dia.		Ø 10,2 mm - 13/32" dia.	
	E40428400	Ø 42,4 mm - 1 2/3" dia.		Ø 12,2 mm - 1/2" dia.	

Composto in 2 pezzi completo di grani filettati  
Two components, complete with screws set

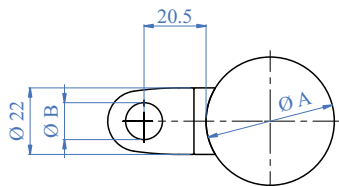


**NEW**

## Supporti Tondino - Round Bar Holders

Composto in 2 pezzi completo di grani filettati  
Two components, complete with screws set

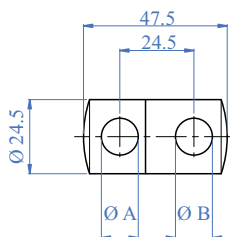
**NEW**



AISI 303	Cod. art. Art. no.	Per tubo For tube	A	Foro Hole	B
	E00699100	Ø 33,7 mm - 1 1/3" dia.		Ø 10,2 mm - 13/32" dia.	
	E00699200	Ø 33,7 mm - 1 1/3" dia.		Ø 12,2 mm - 1/2" dia.	
	E00699300	Ø 42,4 mm - 1 2/3" dia.		Ø 10,2 mm - 13/32" dia.	
	E00699400	Ø 42,4 mm - 1 2/3" dia.		Ø 12,2 mm - 1/2" dia.	

AISI 316	Cod. art. Art. no.	Per tubo For tube	A	Foro Hole	B
	E40429100	Ø 33,7 mm - 1 1/3" dia.		Ø 10,2 mm - 13/32" dia.	
	E40429200	Ø 33,7 mm - 1 1/3" dia.		Ø 12,2 mm - 1/2" dia.	
	E40429300	Ø 42,4 mm - 1 2/3" dia.		Ø 10,2 mm - 13/32" dia.	
	E40429400	Ø 42,4 mm - 1 2/3" dia.		Ø 12,2 mm - 1/2" dia.	

Composto in 2 pezzi completo di grani filettati  
Two components, complete with screws set



AISI 303	Cod. art. Art. no.	Foro Hole	A	Foro Hole	B
	E006965	Ø 12,2 mm - 1/2" dia.		Ø 10,2 mm - 13/32" dia.	
	E006966	Ø 12,2 mm - 1/2" dia.		Ø 12,2 mm - 1/2" dia.	
	E006976	Ø 14,2 mm - 9/16" dia.		Ø 12,2 mm - 1/2" dia.	
	E00696	Ø 16,2 mm - 41/64" dia.		Ø 12,2 mm - 1/2" dia.	
	E006977	Ø 14,2 mm - 9/16" dia.		Ø 14,2 mm - 9/16" dia.	
	E00697	Ø 16,2 mm - 41/64" dia.		Ø 14,2 mm - 9/16" dia.	
	E006978	Ø 16,2 mm - 41/64" dia.		Ø 16,2 mm - 41/64" dia.	

AISI 316	Cod. art. Art. no.	Foro Hole	A	Foro Hole	B
	E006976316	Ø 14,2 mm - 9/16" dia.		Ø 12,2 mm - 1/2" dia.	
	E006977316	Ø 14,2 mm - 9/16" dia.		Ø 14,2 mm - 9/16" dia.	
	E006966316	Ø 12,2 mm - 1/2" dia.		Ø 12,2 mm - 1/2" dia.	



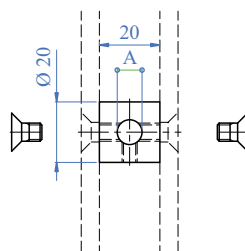
## Supporti Tondino - Round Bar Holders

In acciaio inox, satinati completi di grano filettato e 2 viti di fissaggio  
In stainless steel, satin finish with grain size 240 and 2 assembly screws

AISI 303	Cod. art. Art. no.	Foro Hole A
	E01	Ø 8,2 mm - 5/16" dia.
	E02	Ø 10,2 mm - 13/32" dia.
	E03	Ø 12,2 mm - 1/2" dia.
	E04	Ø 14,2 mm - 9/16" dia.

AISI 316	Cod. art. Art. no.	Foro Hole A
	E01316	Ø 8,2 mm - 5/16" dia.
	E02316	Ø 10,2 mm - 13/32" dia.
	E03316	Ø 12,2 mm - 1/2" dia.
	E04316	Ø 14,2 mm - 9/16" dia.



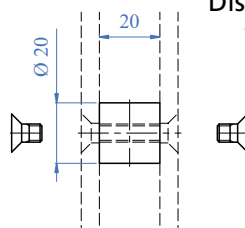
KIT con n° 2 viti M6 x 10 mm



AISI 303	Cod. art. Art. no.	Descrizione Description
<b>NEW</b>	E05	Senza foro - Without hole

AISI 316	Cod. art. Art. no.	Descrizione Description
<b>NEW</b>	E05316	Senza foro - Without hole



Distanziali per piantoni a doppio piatto  
Spacers for double plate newel posts

KIT con n° 2 viti M6 x 10 mm

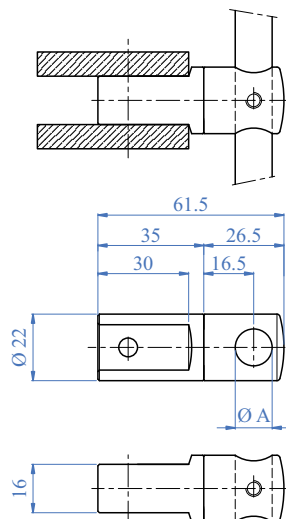


Rigido a due componenti, completo di grani filettati, per piatti  
Two components, complete with set screws for mounting between flat bars

AISI 303	Cod. art. Art. no.	Foro Hole A
<b>NEW</b>	E00611	Ø 10,2 mm - 13/32" dia.
	E00600	Ø 12,2 mm - 1/2" dia.
	E00610	Ø 14,2 mm - 9/16" dia.

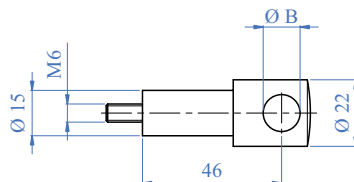
AISI 316	Cod. art. Art. no.	Foro Hole A
<b>NEW</b>	E40611	Ø 10,2 mm - 13/32" dia.
	E40600	Ø 12,2 mm - 1/2" dia.
	E40610	Ø 14,2 mm - 9/16" dia.



AISI 303	Cod. art. Art. no.	Per tubo For tube	Foro Hole B
<b>NEW</b>	E006941	Superficie piana - Flat face	Ø 10,2 mm - 13/32" dia.
	E00694	Superficie piana - Flat face	Ø 12,2 mm - 1/2" dia.
	E00695	Superficie piana - Flat face	Ø 14,2 mm - 9/16" dia.

AISI 316	Cod. art. Art. no.	Per tubo For tube	Foro Hole B
<b>NEW</b>	E006941316	Superficie piana - Flat face	Ø 10,2 mm - 13/32" dia.
	E00694316	Superficie piana - Flat face	Ø 12,2 mm - 1/2" dia.
	E00695316	Superficie piana - Flat face	Ø 14,2 mm - 9/16" dia.

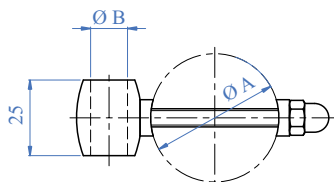


Singolo completo di filetto  
One piece, complete with threading



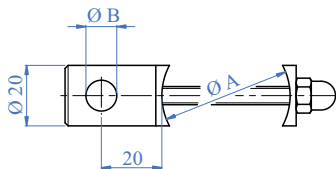
## Supporti Tondino - Round Bar Holders

**NEW**



AISI 303	Cod. art. Art. no.	Per tubo For tube	A	Foro Hole	B
	E00697110	Ø 33,7 - Ø 42,4 mm 1 1/3" dia. - 1 2/3" dia.		Ø 10,2 mm 13/32" dia.	
	E00697210	Ø 33,7 - Ø 42,4 mm 1 1/3" dia. - 1 2/3" dia.		Ø 12,2 mm 1/2" dia.	

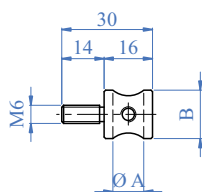
AISI 316	Cod. art. Art. no.	Per tubo For tube	A	Foro Hole	B
	E40427110	Ø 33,7 - Ø 42,4 mm 1 1/3" dia. - 1 2/3" dia.		Ø 10,2 mm 13/32" dia.	
	E40427210	Ø 33,7 - Ø 42,4 mm 1 1/3" dia. - 1 2/3" dia.		Ø 12,2 mm 1/2" dia.	



AISI 303	Cod. art. Art. no.	Per tubo For tube	A	Foro Hole	B
	E00696100	Ø 33,7 mm - 1 1/3" dia.		Ø 10,2 mm - 13/32" dia.	
	E00696200	Ø 33,7 mm - 1 1/3" dia.		Ø 12,2 mm - 1/2" dia.	
	E00696300	Ø 42,4 mm - 1 2/3" dia.		Ø 10,2 mm - 13/32" dia.	
	E00696400	Ø 42,4 mm - 1 2/3" dia.		Ø 12,2 mm - 1/2" dia.	
	E00696500	Ø 42,4 mm - 1 2/3" dia.		Ø 14,2 mm - 9/16" dia.	

AISI 316	Cod. art. Art. no.	Per tubo For tube	A	Foro Hole	B
	E40426100	Ø 33,7 mm - 1 1/3" dia.		Ø 10,2 mm - 13/32" dia.	
	E40426200	Ø 33,7 mm - 1 1/3" dia.		Ø 12,2 mm - 1/2" dia.	
	E40426300	Ø 42,4 mm - 1 2/3" dia.		Ø 10,2 mm - 13/32" dia.	
	E40426400	Ø 42,4 mm - 1 2/3" dia.		Ø 12,2 mm - 1/2" dia.	
	E40426500	Ø 42,4 mm - 1 2/3" dia.		Ø 14,2 mm - 9/16" dia.	

Completo di grano  
One piece, complete with screws set



AISI 303	Cod. art. Art. no.	Foro Hole	A	B
	E00621	Ø 8,2 mm - 21/64" dia.		Ø 16 mm - 5/8" dia.
	E00620	Ø 10,2 mm - 13/32" dia.		Ø 16 mm - 5/8" dia.
<b>NEW</b>	E00622	Ø 12,2 mm - 1/2" dia.		Ø 18 mm - 11/16" dia.

AISI 316	Cod. art. Art. no.	Foro Hole	A	B
<b>NEW</b>	E00621316	Ø 8,2 mm - 21/64" dia.		Ø 16 mm - 5/8" dia.
	E00620316	Ø 10,2 mm - 13/32" dia.		Ø 16 mm - 5/8" dia.
	E00622316	Ø 12,2 mm - 1/2" dia.		Ø 18 mm - 11/16" dia.





ARTEFERRO



ARTEFERRO

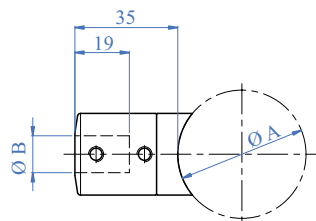


ARTEFERRO

## Supporti Tondino - Round Bar Holders

A due componenti, completo di grani filettati  
Two components, complete with screws set

**NEW**

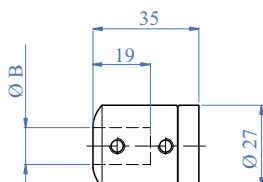


Tondo - Round

AISI 303	Cod. art. Art. no.	Per tubo For tube	A	Tondino Round bar	B
	E01654	Ø 33,7 mm - 1 1/3" dia.		Ø 12,2 mm - 1/2" dia.	
	E01651	Ø 42,4 mm - 1 2/3" dia.		Ø 12,2 mm - 1/2" dia.	
	E01652	Ø 33,7 mm - 1 1/3" dia.		Ø 10,2 mm - 13/32" dia.	
	E01653	Ø 42,4 mm - 1 2/3" dia.		Ø 10,2 mm - 13/32" dia.	

AISI 316	Cod. art. Art. no.	Per tubo For tube	A	Tondino Round bar	B
	E41654	Ø 33,7 mm - 1 1/3" dia.		Ø 12,2 mm - 1/2" dia.	
	E41651	Ø 42,4 mm - 1 2/3" dia.		Ø 12,2 mm - 1/2" dia.	
	E41652	Ø 33,7 mm - 1 1/3" dia.		Ø 10,2 mm - 13/32" dia.	
	E41653	Ø 42,4 mm - 1 2/3" dia.		Ø 10,2 mm - 13/32" dia.	

A due componenti, completo di grani filettati  
Two components, complete with screws set

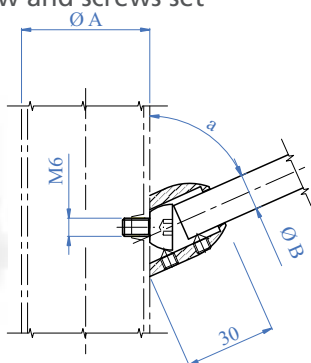


Superficie piana - Flat face

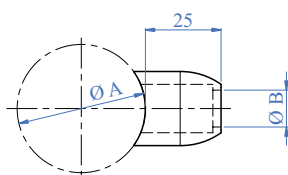
AISI 303	Cod. art. Art. no.	Per tubo For tube	A	Tondino Round bar	B
<b>NEW</b>	E00654	Superficie piana - Flat face		Ø 10,2 mm - 13/32" dia.	
	E00651	Superficie piana - Flat face		Ø 12,2 mm - 1/2" dia.	
	E00652	Superficie piana - Flat face		Ø 14,2 mm - 9/16" dia.	

AISI 316	Cod. art. Art. no.	Per tubo For tube	A	Tondino Round bar	B
<b>NEW</b>	E40654	Superficie piana - Flat face		Ø 10,2 mm - 13/32" dia.	
	E40651	Superficie piana - Flat face		Ø 12,2 mm - 1/2" dia.	
	E40652	Superficie piana - Flat face		Ø 14,2 mm - 9/16" dia.	

Completo di vite speciale M6 e grani filettati  
Complete with special M6 screw and screws set



AISI 303	Cod. art. Art. no.	Per tubo For tube	A	Tondino Round bar	B	a°
	E0069991	Ø 42,4 mm - 1 2/3" dia.		Ø 12 mm - 1/2" dia.		22-33
	E0069994	Ø 42,4 mm - 1 2/3" dia.		Ø 14 mm - 9/16" dia.		25-29
	E0069997	Ø 33,7 mm - 1 1/3" dia.		Ø 12 mm - 1/2" dia.		22-33
	E0069990	Ø 33,7 mm - 1 1/3" dia.		Ø 14 mm - 9/16" dia.		25-29



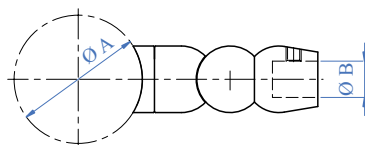
AISI 303	Cod. art. Art. no.	Per tubo For tube	A	Tondino Round bar	B
	E006999	Ø 42,4 mm - 1 2/3" dia.		Ø 12 mm - 1/2" dia.	
	E0069993	Ø 42,4 mm - 1 2/3" dia.		Ø 14 mm - 9/16" dia.	
	E0069996	Ø 33,7 mm - 1 1/3" dia.		Ø 12 mm - 1/2" dia.	
	E0069999	Ø 33,7 mm - 1 1/3" dia.		Ø 14 mm - 9/16" dia.	

diritto - straight  
Utilizzabile per 90°  
Can be used at 90°

## Supporto Snodato per Tondino - Pivotal Round Bar Connector

Snodato, completo di grani  
Pivotal, complete with set screws

AISI 303	Cod. art.	Per tubo	Tondino
	Art. no.	For tube A	Round bar B
	E0075	Ø 42,4 mm - 1 2/3" dia.	Ø 14 mm - 9/16" dia.
	E0074	Ø 42,4 mm - 1 2/3" dia.	Ø 12 mm - 1/2" dia.
	E0073	Ø 42,4 mm - 1 2/3" dia.	Ø 10 mm - 13/32" dia.
	E0077	Ø 33,7 mm - 1 1/3" dia.	Ø 14 mm - 9/16" dia.
	E0076	Ø 33,7 mm - 1 1/3" dia.	Ø 12 mm - 1/2" dia.
	E0078	Ø 33,7 mm - 1 1/3" dia.	Ø 10 mm - 13/32" dia.
	E0079	Superficie piana - Flat face	Ø 14 mm - 9/16" dia.
	E00791	Superficie piana - Flat face	Ø 12 mm - 1/2" dia.
	E00792	Superficie piana - Flat face	Ø 10 mm - 13/32" dia.



Regolabile - Adjustable

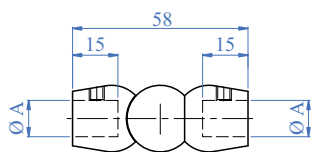
AISI 316	Cod. art.	Per tubo	Tondino
	Art. no.	For tube A	Round bar B
	E0075316	Ø 42,4 mm - 1 2/3" dia.	Ø 14 mm - 9/16" dia.
	E0074316	Ø 42,4 mm - 1 2/3" dia.	Ø 12 mm - 1/2" dia.
	E0073316	Ø 42,4 mm - 1 2/3" dia.	Ø 10 mm - 13/32" dia.
	E0077316	Ø 33,7 mm - 1 1/3" dia.	Ø 14 mm - 9/16" dia.
	E0076316	Ø 33,7 mm - 1 1/3" dia.	Ø 12 mm - 1/2" dia.
	E0078316	Ø 33,7 mm - 1 1/3" dia.	Ø 10 mm - 13/32" dia.
	E0079316	Superficie piana - Flat face	Ø 14 mm - 9/16" dia.
	E00791316	Superficie piana - Flat face	Ø 12 mm - 1/2" dia.
	E00792316	Superficie piana - Flat face	Ø 10 mm - 13/32" dia.

NEW



## Giunzione Snodata per Tondino - Pivotal Round Bar Connector

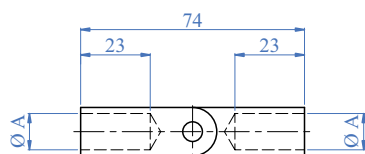
Giunzione snodata per tondini  
Pivotal round bar connector



Regolabile - Adjustable

AISI 303	Cod. art.	Tondino	A
	Art. no.	Round bar	
	E0070	Ø 12 mm - 1/2" dia.	
	E0071	Ø 14 mm - 9/16" dia.	
	E0072	Ø 10 mm - 13/32" dia.	

AISI 316	Cod. art.	Tondino	A
	Art. no.	Round bar	
<b>NEW</b>	E0070316	Ø 12 mm - 1/2" dia.	
	E0071316	Ø 14 mm - 9/16" dia.	
	E0072316	Ø 10 mm - 13/32" dia.	



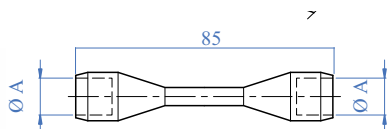
Regolabile - Adjustable

AISI 303	Cod. art.	Tondino	A
	Art. no.	Round bar	
	E0170	Ø 12 mm - 1/2" dia.	
	E0171	Ø 14 mm - 9/16" dia.	
	E0172	Ø 10 mm - 13/32" dia.	

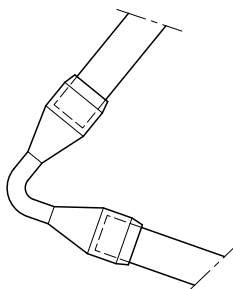
AISI 316	Cod. art.	Tondino	A
	Art. no.	Round bar	
	E0170316	Ø 12 mm - 1/2" dia.	
	E0171316	Ø 14 mm - 9/16" dia.	
	E0172316	Ø 10 mm - 13/32" dia.	

## Giunzione Piegabile per Tondino - Bendable Round Bar Connector

**NEW**



Facilmente modellabile  
Easy to model



AISI 303	Cod. art.	Tondino	A
	Art. no.	Round bar	
	E00700	Ø 10 mm - 13/32" dia.	
	E00710	Ø 12 mm - 1/2" dia.	
	E00720	Ø 14 mm - 9/16" dia.	

AISI 316	Cod. art.	Tondino	A
	Art. no.	Round bar	
	E00700316	Ø 10 mm - 13/32" dia.	
	E00710316	Ø 12 mm - 1/2" dia.	
	E00720316	Ø 14 mm - 9/16" dia.	



# ind.i.a.<sup>®</sup> S. P. A.

INDUSTRIA ITALIANA ARTEFERRO

VIA VICENZA, 6/14

36034 MALO (VICENZA) ITALIA

TELEFONO (+39) 0445 580 580

FAX (+39) 0445 580 874

E-mail:india@arteferro.com

www.ironews.com - www.ilgrandefabbro.com

www.arteferro.com

ARTEFERRO Miami LLC.

2955 N.W. 75<sup>th</sup> STREET  
MIAMI, FLORIDA 33147 - USA  
PHONE: (+1) (305) 836-9232 / 1-877-723-6743  
FAX: (+1) (305) 836-4113  
www.arteferromiami.com info@arteferromiami.com

U.S.A.

ARTEFERROSUD S.R.L.

Via Piana Alvanella 83024 MONTEFORTE IRPINO (AV)  
Tel. (+39) 0825 68 00 81  
Fax (+39) 0825 68 34 98  
(Per Campania - Puglia - Calabria - Basilicata - Molise)  
www.arteferrosud.it info@arteferrosud.it

ITALY

indital<sup>®</sup>

7947 MESA ROAD - HOUSTON  
TEXAS 77028 - U.S.A.  
PHONE: (+1) (713) 694-6065 / 1-800-772-4706  
FAX: (+1) (713) 694-2055  
www.indital.com - forgings@indital.com

U.S.A.

ind.i.a.

28500 ARGANDA DEL REY (MADRID) - ESPAÑA  
C/. ABEDUL, 43 - Poligono "EL GUJAR"  
TEL. (+34) (91) 8701897 - 8700819  
FAX (+34) (91) 8700820  
info@arteferro.es www.arteferro.es

ESPAÑA S.L.

ARTEFERRO Skandinavien AB

SWEDEN: SJÖTULLSG. 3 - S-602 28 NORRKÖPING  
TEL. (+46) (0) 11182323 - FAX (+46) (0) 11182328  
DENMARK: HESSELAGER 19 - DK-2605 BRØNDBY  
TEL. +45 4362 2563 - FAX +45 4362 2535  
www.arteferro.se - info@arteferro.se

SWEDEN - DENMARK

ARTEFERRO Dohomont d.o.o.

SIRKOVIŠE bb 40324 GORICAN - HRVATSKA  
PHONE (+385) (0)40 601-222  
Fax PHONE (+385) (0)40 601-600  
www.arteferro-dohomont.hr  
info@arteferro-dohomont.hr

HRVATSKA

Mobilforge S.A.

Targoviste - Romania Soseaua Gaesti, (sat Colanu)  
Judetul Dambavita  
Tel. 004 0751060204, (004)0745395590  
Fax (004)0745731210  
E-mail: info@mobilforge.com

ROMANIA

ООО "ARTEFERRO Russia"

603092 Nizhny Novgorod (Russia)  
Moskovskoje shosse, 320 B  
TEL (+7) (831) 296-19-99 FAX: (+7) (831) 279-28-63  
www.arteferro.ru - www.arteferrossia.com  
info@arteferrossia.com

RUSSIA

ARTEFERRO Ukraina

5, AVTOPARKOVA, 02660 Kiev - Ukraine  
Tel.: (+38) (044) 4920331  
Fax: (+38) (044) 4920332  
E-mail: arteferroukraina@svitonline.com  
www.arteferroukraina.com

UKRAINE

ind.i.a.

ul. Gierdziejewskiego 7  
02-495 Warszawa POLAND  
Tel +48 (22) 397-79-40  
Fax +48 (22) 397-21-55  
info@indiapoland.com - www.indiapoland.com

POLAND S.p.A.

ARTEFERRO Monterrey S.A. DE C.V.

Av. E. Martinez Lara # 117 Parque Industrial MILMEX  
Carretera Sta. Rosa Km. 3 Apodaca,  
Nuevo León C.P. 66637  
Teléfono: (81) 1295-5094 / 1295-5095  
Fax: (81) 1295-5097  
info@arteferromonterrey.com  
www.arteferromonterrey.com

MEXICO

ind.i.a.

RUA PADRE FEIJÓ, 480 CEP 95190-000  
SÃO MARCOS / RS BRASIL  
TEL. - FAX (+55) (0) 54 32911416  
www.arteferrobrazil.com.br  
arteferro@arteferrobrazil.com.br

BRASIL Ltda

ARTEFERRO Argentina S.A.

Suarez 760  
(1162) Capital Federal Buenos Aires  
Republica Argentina  
TEL./Fax (+54) 11 43012637

ARGENTINA

ARTEFERRO Chile S.A.

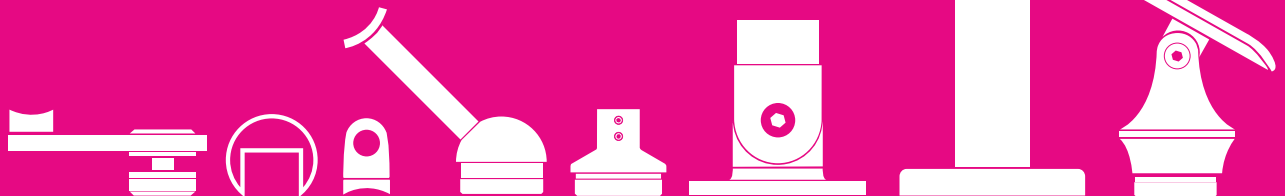
LOS ARRAYANES 250, COMUNA DE COLINA,  
SANTIAGO DE CHILE

CHILE

ARTEFERRO BOTNIC INTERNATIONAL LTD

Block C/5 Lagos State small scale Industrial Estate,  
Fatai Atere Way, Matori, Lagos  
Tel. 00234 1 891 4155 - 00234 1 2799 093-4  
www.arteferrobotnic.com  
info@arteferrobotnic.com

NIGERIA



WWW.ARTEFERRO.COM